



Department of
Justice

An Roinn Dlí agus Cirt

Mánnystrie o tha Laa

www.justice-ni.gov.uk



What YOU thought of our ideas for a new Care and Justice campus



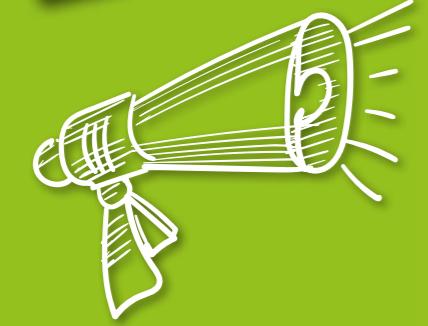
Department of
Health

An Roinn Sláinte

Mánnystrie O Poustie

www.health-ni.gov.uk





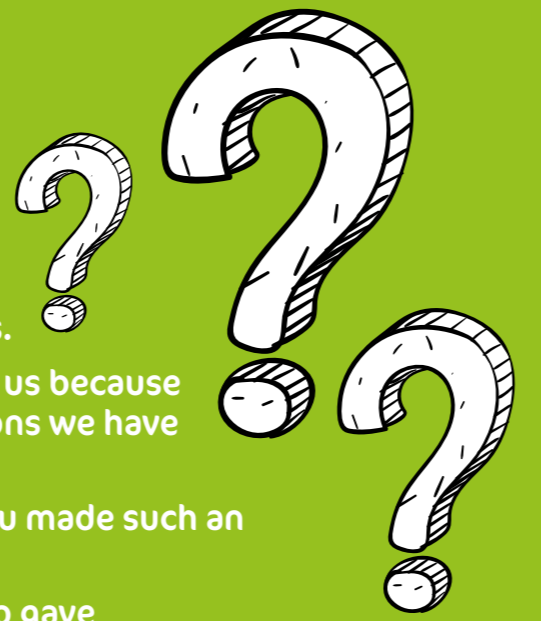
WHAT'S IT ALL ABOUT?

We asked you what you thought of our ideas for a new Care and Justice campus.

It has been a very difficult time for all of us because of the Covid pandemic and the restrictions we have had to live with.

We are really pleased that so many of you made such an effort to tell us what you think.

We are grateful to the organisations who gave you the chance to have your say.



Here is a summary of what you told us - we have also set out what happens next.

This is just the beginning of the conversation - we hope to keep hearing from you as our plans develop.

Thank you for your help so far.



IDEA Bringing the Care and Justice centres together

We asked if you agreed that there should be one Secure Care Centre instead of two separate ones. This would mean that the two buildings (Woodlands and Lakewood) would operate together to create a new Secure Care Centre.

We also asked if you thought this might cause problems.

YOUR VIEWS

- Some of you felt that the centres should remain separate because young people from the justice system might have a bad influence on others.
- Some of you told us that vulnerable young people might not be safe in a mixed centre.
- Others thought that the new centre should be about meeting your needs, so it doesn't really matter how you come to be there.
- You felt that good things about both centres should become part of the new centre.



"Yes it would cause problems - it won't work, they shouldn't mix young offenders and those at risk, as they may be a negative influence."

"It's a bad idea - kids who want to harm themselves will be with kids who have committed a crime."

"All the young people who go to JJC or Secure have the same type of behaviours but if they don't get help with mental health and emotional wellbeing then it does not matter where they are."

NEXT STEPS

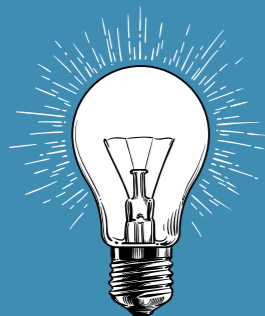
- Because of what we have heard about the impact on children and young people of having two separate centres, we will go ahead and make more detailed plans for setting up the new Secure Care Centre.
- We hear that some of you worry that children and young people might not be safe in the new centre. We will put safety at the heart of the plans for a new centre and we will have independent experts check out the safety arrangements.
- We will make sure that what happens in the new centre will be based on meeting your needs.





Workers planning together

We asked if you thought it would be a good idea for doctors, care workers, social workers and specialists to get together to make plans to meet your needs.



IDEA

YOUR VIEWS

- Most of you thought this was a good idea.
- You suggested that youth workers, peer mentors, parents, counsellors, employability workers and staff from other organisations should all be involved in making the plan.
- Many of you suggested that young people who have been through the system could be a very helpful part of the team.
- You told us that having a detailed plan would support you to take part in activities that could help you.



“Counsellors would be an integral part of the team. I suffer from mental health issues and these need to be addressed and accounted for when making decisions on my well-being.”

“Someone to listen to you and to give you advice, offer you opportunities - say what jobs might suit you and help you go for it.”

“A good mixture would probably be the best way forward. I think workers who have been through the system themselves would be more empathetic to our situations, someone who went through the same experiences and was youth work trained.”

NEXT STEPS

- We will make detailed plans about how different workers can best work together.
- We will look at all the suggestions you made about who should be on the team.
- It is likely that the team will include health workers, therapists and education workers as well as other staff.

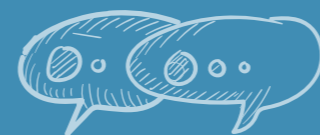


IDEA

Setting up a panel to make decisions and involving you more

We asked if you thought we should set up a panel to make decisions and who you thought should be on it.

We also asked if you would like to talk to the panel yourself or have someone else speak for you.



YOUR VIEWS

- Most of you thought this was a good idea.
- You told us that Social Workers, Youth Workers, Counsellors and CAMHS should be part of the panel.
- You felt that you should have the support of a trusted worker or someone from Include Youth or VOYPIC, to connect with the panel - but that there should also be a variety of ways to do this yourself.
- Some of you felt that an independent panel might make fairer decisions.



“I would rather someone fed back to me. I would go mad with people round a table discussing me.”

“I’d want to be there to make my point myself, and to hear what’s said.”

“I do think the panel is great because in the past social workers were taking advantage, if they could not deal with someone, they would just send them up.”

NEXT STEPS

- We will go ahead and make arrangements to set up the panel.
- In setting up the panel we will work with you and those responsible for your care to make sure you have a say in all the decisions that affect you.
- We will also make sure you get support to have your say or you can have someone to speak for you, if you prefer.





Having better links with the community

We asked if you thought it would be a good idea for the Secure Care Centre to have strong connections with organisations and services in the community.



IDEA

YOUR VIEWS

- You told us of problems you faced when you left Lakewood and Woodlands because there was not enough support for you in the community.
- Many of you felt there should be more support based in local communities and that this could help stop young people from having to come into the new centre.
- You felt there should be local places in the community that could offer a Place of Safety.



“Secure was really helpful, I got help when I was in there. I just would have needed more when I was sent home.”

“There should absolutely be more residential facilities placed throughout Northern Ireland as having just one location makes it less accessible for people who live in, say, Limavady.”

“They just weren’t offered the right support - they shouldn’t have ended up there.”

NEXT STEPS

- We will look at developing parts of the Care and Justice Campus in the community, so that as many young people as possible can be supported close to home.
- We are researching what services are available in the community so we can see what is missing and fill the gaps.
- While we are developing alternatives the Secure Care Centre will be used as a Place of Safety - but we will use this option as little as possible.
- We will look at things like transport to make sure that families are able to visit the new centre.



IDEA

Having a Step-Down Unit

We asked if you thought a step-down unit, to help you move back to the community, was a good idea. We also asked how it might be able to help.



YOUR VIEWS

- Almost all of you felt this was a good idea.
- Some of you felt that it would be good to have a step-down type unit in lots of local areas across Northern Ireland.
- Some of you suggested that the unit would need to have more than four beds.
- You felt that programmes like Give and Take and skills training could help you return to the community.



“Good idea to have a phased return rather than being let back out to society and not being prepared.”

In Secure, an immediate strict routine begins right away, then, when young people leave Secure, the routine is ripped away and they are left floundering on the outside again.”

“It is really important for a young person to move to an area in the community that they like and where they feel safe, for example beside friends or family or an area that they knew and were familiar with.”

NEXT STEPS

- We will go ahead and develop plans for a step-down unit on the Bangor site, close to the new Secure Care Centre.
- We will also work with Trusts to explore locally based step-down arrangements to support young people as close as possible to their home and families.
- We think that having one centre, instead of two centres, will mean that we can do more to help support you in the community.



The most important next step will be to find more ways of making sure that **YOUR IDEAS** can help shape the new Secure Care Centre.

Thank you for your help!



CARE AND JUSTICE CAMPUS

